

EVERYTHING OF VALUE IN LIFE
REQUIRES EXPERT HANDLING.



INTERNATIONAL PRIVATE BANKING

- Offshore Banking
- Treasury and Foreign Exchange
- Investment Management
- Trust and Company Administration



LEOPOLD JOSEPH

MERCHANT BANKERS
GUERNSEY

Financial strategies for sports strategists.

WOMEN'S WORLD SQUASH.

GUERNSEY '94

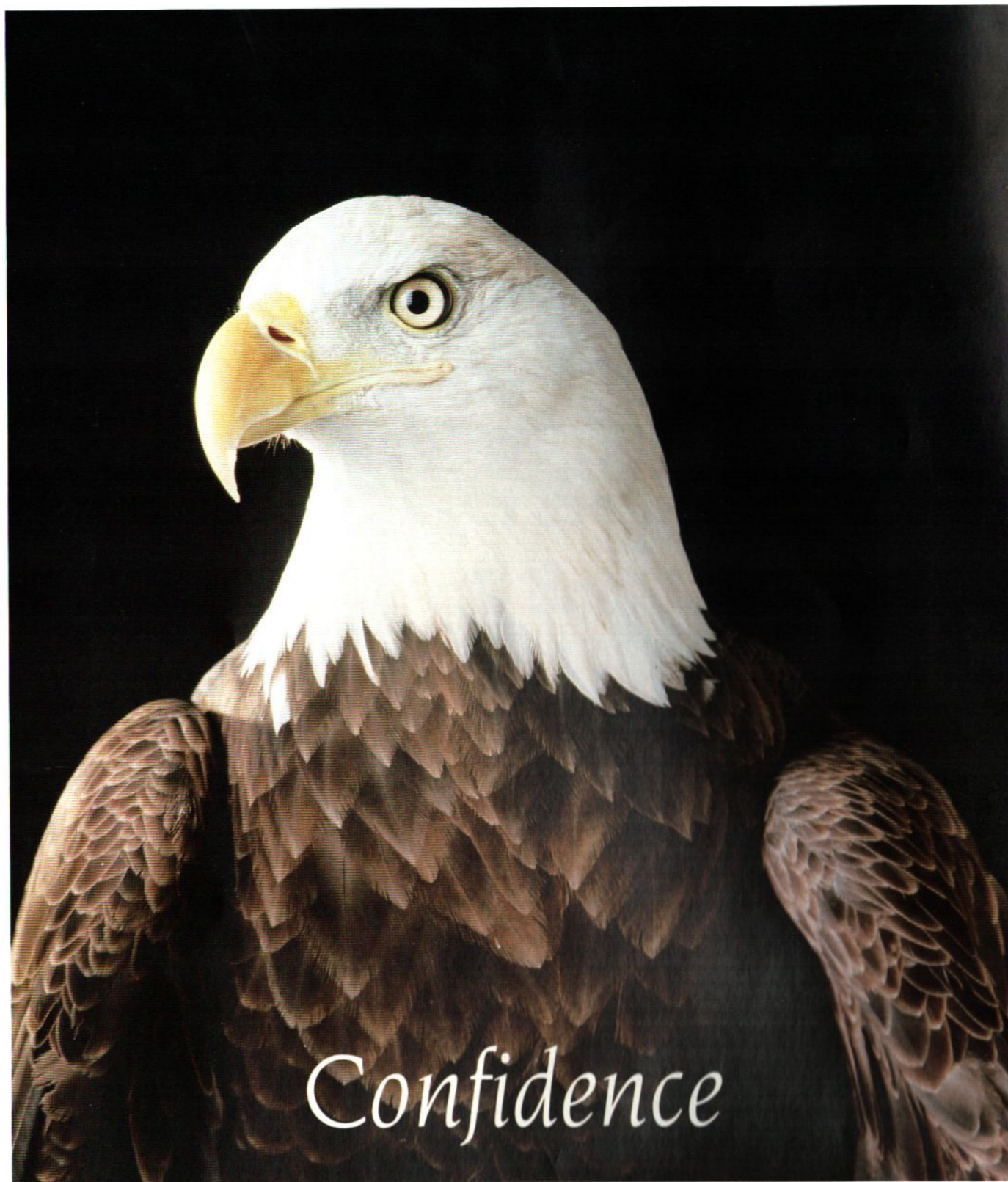
Women's World Open
2-9 October

Women's World Teams
10-15 October

Beau Sejour Centre, St Peter Port
Guernsey, Channel Islands

Souvenir Programme £2

CHAMPIONSHIPS



Confidence

GP PRINTERS

THE CHANNEL ISLANDS LEADING PRINTERS

GUERNSEY: Braye Road, Vale, Telephone 45866 JERSEY: No 1, West Centre, St Helier, Telephone 67686

Contents

Page 3	<i>Organising Committee and Spectators Notes</i>
Pages 4 - 5	<i>Welcomes</i>
Page 8	<i>Diary of Events</i>
Page 9	<i>Preview by Colin McQuillan</i>
Pages 10-11	<i>Contenders - profiles of the top seeds</i>
Pages 14-15	<i>Qualifying Competition</i>
Pages 16-17	<i>Individual Event</i>
Page 18	<i>A look back</i>
Pages 20-21	<i>Summary of past winners</i>
Page 22	<i>World Open draw and official suppliers</i>
Pages 23-25	<i>Team events - stages 1 and 2</i>
Page 27	<i>Team Championships summary</i>
Pages 28-29	<i>Team contenders</i>
Pages 30-31	<i>Guernsey boasts fresh pastures for squash</i>

Acknowledgements

The SRA simply could not have made these Championships work without the help and support of many organisations and individuals who have played such an invaluable role in helping to stage the Women's World Squash Championships, Guernsey '94.

Not only did the Association receive major financial support from Guernsey Tourism but enthusiasm and wide ranging support too. The Sports Council, offering to underwrite the event provides an element of financial security has been as important, as has Nestle, whose support and product is a great benefit to the events.

It would be of little value to have funding without the right places in which to stage the event, and in the Beau Sejour Centre and Kings Club we have two venues, both of which have enthusiastically embraced the Championship. The professional management at Beau Sejour has enabled the "Perspex" court and other facilities required to have been smoothly put into place. Kings Club, who have provided courts and use of their new function room, has ensured a warm welcome for all players who compete there. The Welcome Party has been the beneficiary of financial support from ANZ Bank.

The players themselves will spend a great deal of their time at the Championship Hotel, the St Pierre Park. The best hotel on the island has thrown open its doors to players, officials and delegates to the World Squash Federation Annual General Meeting, all of whom cannot fail to be impressed by it.

When the players go out, the provision of coaches from the Guernsey Bus Company, together with cars from Baubigny and Sarnia Car Hire companies are a superbly flexible bonus.

Transportation has been pulled together under the auspices of Total Guernsey who have been enthusiastic supporters of the Championship from the outset. Other contributors include the Insurance Corporation of the Channel Islands who have kindly sponsored the transportation of the SRA "Perspex" court to St Peter Port, and Air UK who are the official carriers of the England team and assisted in the transport of many other players, officials and delegates to the event.

Of course, one cannot forget the Referees, both local and from the mainland, who have brought their expertise to the Championships.

Additionally the SRA is extremely grateful for the continued support of Canon and Dunlop. Canon provide the essential photocopier and fax machinery that are required in the Championship and Press Offices and Dunlop are Official Squash Ball Supplier to the World Squash Federation.

Finally, the enduring support of Guernsey islanders generally, and the Guernsey SRA specifically, has been absolutely magnificent. Guernsey SRA Secretary, Marilyn Pugh, has worked unstintingly in so many areas and her Committee and other supporters who have offered great backing.


The support of all sponsors, suppliers, venues and individuals is greatly appreciated. ■

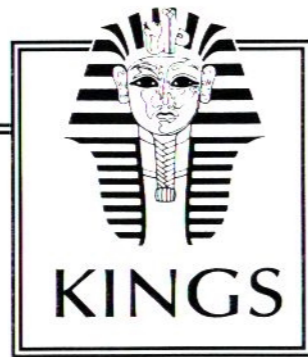

**WORLD
SQUASH**

Guernsey '94

Official Sponsors




**GUERNSEY SQUASH
RACKETS ASSOCIATION**



a unique opportunity to enjoy the finest leisure facilities

SQUASH Four international squash courts maintained to the highest standard for competitive play at all levels. Kings leagues offer the chance for you to improve your game with regular play and junior participation is encouraged. Viewing gallery for interclub or major competitions and professional coaching for beginners to advanced players. Kings will be supporting talented players through sponsorship.

TENNIS Six Savanna all weather courts, two of which are floodlit, ensuring an excellent surface for club players. Superb environment for tournament and leagues with a regular programme of events. Professional, individual or group coaching for all standards and junior involvement is particularly welcomed. Kings will be supporting talented players through sponsorship.

SNOOKER Two superbly appointed snooker lounges each with a quality Riley full size table for that leisurely game. All requirements provided including balls, cues, rests etc. The adjoining rooms can be made into one for a large party or competitive play.

GYMNASIUM A 156 sq.m. purpose built brand new gymnasium with the latest equipment by Sportesse Germany, incorporating approximately 35 individual pieces of equipment. This is open seven days a week during normal club hours for both ladies and gentlemen except "ladies only" sessions will be on Monday, Wednesday and Friday, 9.00 am to 12 noon.

AEROBIC DANCE STUDIO A superbly well equipped 156 sq.m. Aerobic-Dance Studio which provides a choice of classes to members throughout the day, will be available as from the beginning of January 1995.

OUTDOOR SWIMMING POOL A beautiful fully tiled 20 metre outdoor heated swimming pool maintained to a minimum 78°F from May to September. An abundance of garden furniture and many comfortable sun loungers invite you to relax in pleasant surroundings and observe the pool activity.

LOUNGE BAR & RESTAURANT/COFFEE SHOP Our newly refurbished Lounge Bar and Restaurant/Coffee Shop which is the social centre of the Club awaits you. Our popular lunch time and evening menu offers a choice of salads, hot dishes and daily specialities.

FUNCTION ROOMS Our function rooms can either be separated into two rooms or used as one large room. The seating capacity for function suite 1 is 95 people and for function suite 2, 65 people together with two separate entrances and garden terrace. The maximum number of persons, not all seated, will be 260.

KINGS CROWN A LA CARTE RESTAURANT – Open to all members Our A La Carte Restaurant "Kings Crown" comfortably seats 36 people and together with the excellent food and fine wine, you can enjoy a relaxing meal overlooking our illuminated outdoor swimming pool or have an aperitif on the open air terrace.

A privately owned club offering a wide variety of leisure and sporting activities for the beginner to the semi-professional and the socially inclined.

THERE IS A MEMBERSHIP CATEGORY TO SUIT EVERYONE.

KINGS CLUB LTD • KINGS ROAD • ST PETER PORT • GUERNSEY • GY1 1QF • TEL 0481 723366 • FAX 0481 711231

Organising Committee

Women's World Championships Guernsey 1994

Championship Committee

Paul Turton (Chairman)

Peter Bachmann

Jenny Barker

Marilyn Pugh

Barbara Sanderson

Val Watson

Philip Carling

Andrew Shelley

(Championship Marketing)

(Championship Director)

Championship Administrator

Tricia Ratcliffe

Administration Staff

Myrna Burger

Tina Dexter

Paul Nash

Judy Williams

Mike Picken

Howard Harding Associates

Samantha Johnson

Lisa Opie

Ann Jee

Ray Woodcock

Jenny Barker

Susie Simcock

Ann Jee

Lisa Opie

Andrew Shelley

Marilyn Pugh

Championship Referee

Press Office

WSF AGM Liaison

WISPA Representative

WSF Technical Director

Venue Controller (Kings)

WSF Panel

Guernsey SRA Liaison

A Big Thank You

There have been a number of companies, organisations and individuals who have contributed in many ways towards the various activities surrounding the World Championships, including the welcome packs supplied to all competitors.

They include: Sark Shipping Company, Les Folies d'Amour Nightclub, Partners Restaurant, Moulin Huet Pottery, Elizabeth College and States Education Council, The BuzzBar, Tradesavers and G Orange, Guernsey Youth Orchestra, Guernsey Music Centre Pupils, Randalls Brewery, Pineapple Hair Salon, Guernsey SRA Junior Squad. Grateful thanks of the SRA are extended to these and other supporters of the Championships.

Spectator's Notes

During the course of the Women's World Championships we would like to ensure that players, spectators and officials get the maximum enjoyment from this major event. Therefore to achieve this, spectators are asked to follow a few basic guidelines:

Spectators should be seated and comfortable at least five minutes before the warm-up session of each match. Spectators are expected to keep perfectly still during the game, so that the player's concentration is not lost. Silence is, of course, mandatory during rallies. Please restrict applause and vocal support until the end of the rally, as this can affect concentration. Remember, it is most unsporting to applaud a rally won on a foul shot. No flash photography is allowed under any circumstances during matches.

Please note that pagers and portable telephones are not permitted in the vicinity of the courts in either of the centres, and during matches should be switched off.

No food and drink can be consumed whilst spectating at matches in either of the centres.

Smoking is not permitted in the auditorium at the Beau Sejour Centre or the court area at Kings Club.

Spectators will only be allowed into the auditorium between games. Flash photography is not permitted.

For up to date information on results and tomorrow's matches, don't forget to ring the Guernsey Telecom Event Line by dialing 8030

Welcome from the Squash Rackets Association

World Championships are very special. The players meet and compete, and the AGM delegates debate and decide. There is always great competitiveness combined with the squash fraternity enjoying coming together.

It is a great pleasure for the SRA to be able to host the Women's World Championships this year, and we hope that our playing and social arrangements lead to a successful event. Certainly the requisite factors are in place. We have the opportunity to bring everybody to the lovely holiday isle of Guernsey and as you will have experienced from the moment you arrived, there is a level of hospitality here second to none.

We have many organisations and individuals to thank, and whilst I can only mention a few here, the invaluable support of everybody involved is greatly appreciated. It was a great boost when Guernsey Tourism agreed to underwrite the prize fund and from their support and

enthusiasm flowed many other official suppliers and supporters. Notably included were the Sports Council who will ensure the financial stability of the Championship.

Interwoven with this has been the unstinting enthusiasm of the two venues, Beau Sejour Centre and Kings Club, and practical and personal assistance of Marilyn Pugh and her Guernsey SRA team. We thank them all.

When the SRA undertook the Men's World Championships in 1987 we were able to host all the delegates at the World Federation AGM and it is a great pleasure to be able to do so again. Around fifty people from all continents will be assembling for formal and informal discussions, and we welcome them warmly, as other previous AGM hosts have done to our delegates.

On the playing side the team holders, Australia and individual Champion, Michelle Martin, will be defending their crowns on the SRA transparent court, and we await the



challenge from England and beyond with interest.

From a parochial point of view, we naturally hope that our own team might regain the team title last held in 1990. With the increasing international depth of women's squash there is no doubt that whoever triumphs will be genuine champions of the world, and fully deserving the accolade. If by doing so the attendant media coverage raises the profile of women's squash, we will all have reason to be pleased.

We welcome players, officials, delegates, press and spectators to these Championships, and are sure that your time on Guernsey will be memorable.

Paul G Turton
SRA Chairman

We at Greig Middleton believe that it is possible to provide a professional, high quality investment management and stockbroking service, without losing the personal touch.



P.O. Box 8, 2nd Floor, TSB Weighbridge Premises,
Le Truchot, St. Peter Port, Guernsey GY1 4AE,
Channel Islands.
Tel: (0481) 726511 Fax: (0481) 711483
Telex: 4191339

44 Esplanade, St. Helier, Jersey JE2 3QB.
Tel: (0534) 280068 Fax: (0534) 280070

Contact:
Shane Le Prevost, Jon Ravenscroft,
Shaun McDade or Mark Bacon

Members of The London Stock Exchange
and The International Securities Market Association

Welcomes from the...

Women's International Squash Players Association

What a pleasure it is to return to Guernsey, the host country of the Worlds' most prestigious squash title - The World Individual and Teams Event. This island and Kings Club members are not strangers to the Women's International circuit, with the first WISPA tournament being staged here in 1991.

WISPA, WSF and SRA are proud to present this major international tournament, in conjunction with the generous sponsorship and support of the Guernsey Tourist Board, Nestle and the Sports Council. The media coverage, due to the enormity of the even and perspex court, should be tremendous, allowing excellent television viewing.

The relationship between players, locals and sponsors over the years has developed into a very relaxed and friendly atmosphere. Born and bred on the island, Lisa Opie and Martine Le Moignan, synonymous to the world of women's squash, will add that extra ingredient to ensure the entire event will be a huge success.

Lastly, welcome to all competitors and newcomers to the Channel Isles, especially Israel and Egypt, experiencing their first taste of world level women's competition.

Enjoy and Good Luck!!



Sarah Fitz-Gerald
WISPA Chairwoman



World Squash Federation

Surely the greatest prize in the sporting world is the title "World Champion". With it goes not only the admiration of every other player of the sport, but also recognition of the dedication, the skill, the mental and physical strengths, which are all hallmarks of the true athlete.

This is especially true of World Team Championships, where the individual must operate on two levels, the personal and the corporate, to generate the pure concept of "Team Spirit".

Even though only one team and one individual can gain the World Champion title in Guernsey, all other players can take a pride in knowing that they have competed in a World Championship and become identified as the best of their generation. What is most important is to compete fairly and to the best of one's ability. If this is done then victory or defeat becomes of secondary importance.

We are particularly pleased to be able to hold 1994 Women's World Championships in Guernsey, a small state which has produced more than its fair share of top Squash players. With such a proud heritage I am confident that the Championships will be the most successful ever and give my thanks and good wishes to all those who have made this great event possible.

Y A M Tunku Imran
President World Squash Federation

Guernsey Tourist Board

On behalf of the Guernsey Tourist Board - and indeed the people of Guernsey - may I extend to you the warmest of welcomes.

We are, of course, very flattered that the 1994 Women's World Squash Championships are taking place in our Island and knowing the effort that has been put into organising it all over the past months, I am certain that the Women's World Open and the Women's World Teams events will be a terrific success.

If you are reading this as a visitor to Guernsey, whether as a player, a delegate or spectator, I do encourage you to find some time away from all the action of the squash courts to take the opportunity of exploring our Island and discovering the charms that it offers. In addition to its beauty and tranquil atmosphere, it is also worth visiting some of our many places of interest if time permits. Guernsey is somewhere where the pace of life tends to be rather more relaxed than much of the rest of the world and you may notice this special atmosphere during your stay; beware - it's quite addictive!

Once again, welcome and I wish everyone concerned the very best of luck during the Championships.



Deputy Geoff Norman
President Guernsey Tourist Board

St Pierre Park Hotel Guernsey

Conveniently located on the outskirts of St Peter Port and in close proximity to the Beau Sejour Leisure Centre and the Kings Leisure Club where the Championship will be held, the St Pierre Park Hotel is perfectly placed amidst 45 acres of quiet, mature parkland, which includes a 9 hole, par 3 Tony Jacklin designed golf course, 3 tennis courts and a snooker room. The superb accommodation, cuisine and facilities undoubtedly make The St Pierre Park Hotel the finest hotel in the Channel Islands. All 135 en-suite rooms are tastefully appointed and open onto a terrace or balcony. Extensive room services are provided with direct dial telephone, colour television (with satellite programmes) and radio, tea and coffee making facilities, trouser press, hair dryer, baby listening system and efficient 24 hour room service.

The St Pierre Park features two award winning restaurants, the Victor Hugo where you can enjoy the finest a la carte French cuisine and wines of the highest international standards, and the more informal Cafe Renoir which is open throughout the day for morning coffee, lunch, afternoon tea, dinner and al fresco dining when the weather is fine.



dining when the weather is fine.

In addition to its challenging golf course, the St Pierre Park boasts an excellent Health and Leisure Suite. The 25m indoor heated swimming pool has adjacent saunas and steam rooms together with an invigorating spa bath - all designed to stimulate and soothe your body - perfect relaxation after an energetic day.

A wide range of Health and Beauty

Treatments are available from our trained beauticians as well as trimming and toning tables that take all the effort out of exercising. For the more sporty, the Health Suite offers a fitness room with the latest equipment and a trim trail.

The St Pierre Park Hotel, Rohais, St Peter Port, Guernsey GY1 1FD

Tel: 0481 728282 Fax: 0481 712041 ■

A purpose-built holiday venue in a natural holiday destination.

Many destinations of note have an hotel that is worthy of the discerning traveller's attention.

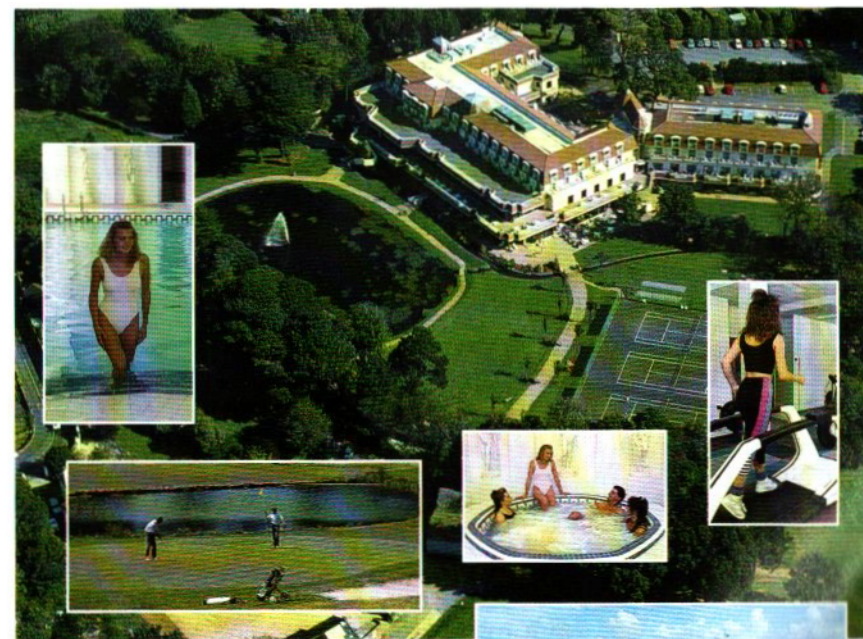
On the beautiful Channel Island of Guernsey, it is the St. Pierre Park Hotel.

Set in 45 acres of rolling parkland, the St. Pierre Park Hotel offers a tranquil haven in which to relax and unwind

There are three excellent restaurants, luxurious accommodation, an exclusive health suite, 9-hole golf course, and numerous other leisure facilities.

The charm of Guernsey, with its clean beaches, dramatic towering cliffs and gentle climate, and the luxury of the St. Pierre Park make the perfect destination for a break, away from a hectic lifestyle.

For further information and a brochure please call us on
FREEPHONE: 0800 373321.



The
St Pierre
Park
HOTEL

GUERNSEY, CHANNEL ISLANDS

★★★★ AA & RAC



The St. Pierre Park Hotel, Rohais, St. Peter Port, Guernsey, Channel Islands. Telephone: 0481 728282 Facsimile: 0481 712041. Signpost, Ashley Courtenay & Egon Ronay RECOMMENDED

Beau Sejour Centre, Guernsey

The name says it all; Beau Sejour, Guernsey's leisure centre is, as the loose translation indicates, "a great place to be."

Situated in its own parkland just on the outskirts of St Peter Port, the Centre is a leisurely fifteen minute walk from the town's busy shopping area and regular bus services also pass the entrance. In its extensive grounds will be found tennis courts, a bowling green, a trim trail, enclosed playgrounds for youngsters and parking for about 400 cars.

Inside, of course, are facilities for squash and for a wide variety of other indoor sports. There are five Squash courts, two of which are glass-backed, though for the Women's World Championships, an additional "perspex" court will be erected in the main sports hall where there will be tiered seating for over 700 spectators.

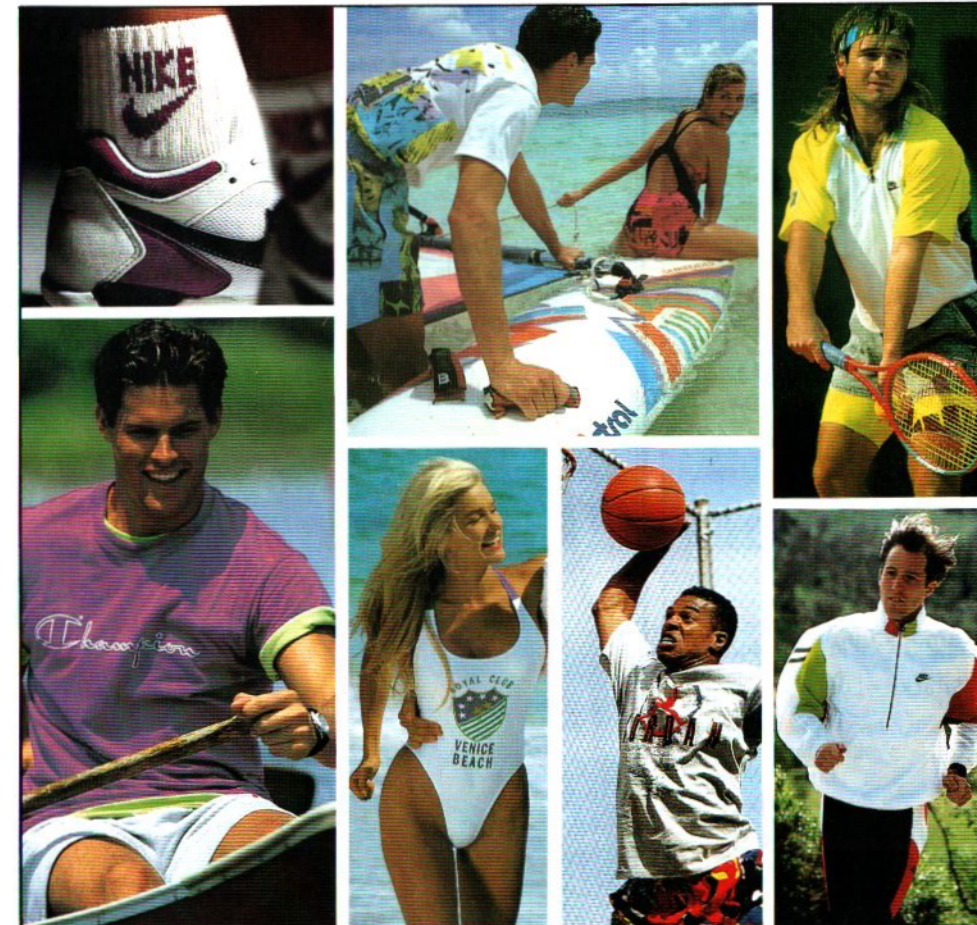
There is also a large leisure pool, complete with water slides, and an attractive health suite with sauna and steam rooms and seven sunbeds. There is



also a beauty salon which offers an extensive range of treatments.

A wide selection of aerobic and other equipment is available in the gymnasium, the "Muscle or Tone" Centre.

The Centre has a number of bars and an attractive licensed cafe with an extensive choice of popular dishes and special low-price menus for children. ■



FLETCHER
Sports

The Islands Premier Sports Shops
The Arcade - tel: 724114 The Bridge - tel: 45656.

Diary of Events

World Open/October 2-9

Date	Time	Venue	Detail
Sunday 2	1200	BSC/KC	Qualifying Round 1
Monday 3	1200	BSC/KC KC	Qualifying Round 2 Round 1 - Consolation Plate
Tuesday 4	1300 1800	BSC/KC BSC/KC KC	First Round - Open First Round - Open Last 16 - Consolation Plate
Wed 5	1300 1800	BSC/KC BSC BSC BSC	Second Round - Open Round 1 - Plate Second Round - Open Round 1 - Plate Quarter Finals - Consolation Plate
Thursday 6	1300 1800	BSC BSC BSC BSC	Last 16 - Open Semi Finals - Consolation Plate Last 16 - Plate Last 16 - Open Las 16 - Classic Plate
Friday 7	1400 1800	BSC BSC BSC BSC	Quarter Finals - Open Final - Consolation Plate Quarter Finals - Plate Quarter Finals - Open Quarter Finals - Classic Plate
Saturday 8	1500	BSC BSC BSC	Semi Finals - Open Semi Finals - Classic Plate Semi Finals - Plate

Sunday 9	1500	BSC/SPP	Squads lodged (merit order for teams)
		BSC	Final - Classic Plate
		BSC	Final - Plate
	1600	BSC	Final - Open
		BSC	Team squad orders announced

World Team/ October 10-15

Monday 10	1400 1800	BSC/KC BSC/KC	Pool Matches Pool Matches
Tuesday 11	1400 1800	BSC/KC BSC/KC	Pool Matches Pool Matches
Wed 12	1400 1800	BSC/KC BSC/KC	Pool Matches Pool Matches
Thursday 13	1300 1800	BSC/KC BSC/KC	Quarter Finals Quarter Finals
Friday 14	1300 1800	BSC/KC BSC/KC	Semi Finals & Play Offs Semi Finals & Play Offs
Saturday 15	1030 1330 1500	BSC/KC BSC/KC BSC	Play Offs Play Offs Final

BSC	=	Beau Sejour Centre
KC	=	Kings Squash Club
SPP	=	St Pierre Park

Women's World Championships in Guernsey

A Preview by Colin McQuillan

It would have been useful to have had the results of the Talking Pages Open in Windsor before writing this preview of the 1994 Womens World Championships held in Guernsey with the support of Guernsey Tourism, Sports Council, the Nestle Company and a small host of local sponsors.

The Asian circuit which concluded the last season seems a good way off and form can fluctuate alarmingly over such lay-off periods.

It is, of course, difficult to dismiss the claims of Australia's Michelle Martin to primary billing in the whole affair. She is the defending champion and undefeated since Liz Irving, her second ranked compatriot, won a second successive Welsh Classic title back in February.

Irving, in fact is the only player to have defeated Martin, three times in all, since she lost the 1992 World Open Final to Susan Devoy in Vancouver.

They have shared nine major finals since then, including the last World Open Final in Johannesburg, with Irving winning twice in Welsh Finals and once in a Melbourne semi-final.

Others who have tested themselves against the World Champion in finals during that period include Cassie Jackman, Suzanne Horner and Sue Wright of England, and Sarah Fitz-Gerald and Carol Owens of Australia.

Of those, only FitzGerald has extended Martin to five games, in the 1993 Malaysian Open Final, and only Jackman has either taken a game, in this year's Hong Kong Final, or reached more than one final against her. Owens, it should be noted, took Martin into two tie breaks in their JSM Supersquash Final in Tokyo this year.

Jackman is coming perilously close to resembling Qamar Zaman, the great Pakistani player who played the 'nearly man' to the last years of Geoff Hunt and the first years of Jahangir Khan.

The Norfolk 21-year-old tried desperately to clinch a win over Devoy in her late teens and has entered her twenties trying the same thing against the re-invented Michelle Martin.

In Asia this year, after a torrid time in the Johannesburg World Open where she lost a quarter-final to Germany's Sabine Schoene, in the SRA National Championships in Welwyn Garden City where she lost a quarter-final to Jane Martin, and in the Hi-Tec British Open in London where she lost to Martine Le Moignan in the second round, Jackman began to win again to reach the Supersquash semi-finals and the finals of both the Malaysian and Hong Kong Opens.

"I have been training harder and working with a sports psychologist," Jackman said during that series. "I think I am through the bad run and beginning to play to my potential again. I have never been as worried as other people have been about my winning major titles. People seem to forget how young I was when I started out."

could bring Le Moignan back into contention for an England place in the subsequent team championship.

Other younger ambitions may preclude her selection though. Jackman will probably lead the England line, although Suzanne Horner was the National Champion and the England number one at the time of writing,

with Sue Wright listed ahead of Le Moignan and both Fiona Geaves and Jane Martin immediately below.

Australia will presumably defend their team title with Martin, Irving, Fitz-Gerald and Owens, all of whom could emerge from the individual event with even stronger credentials than were already apparent on the WISPA world ranking list at the time of writing.

New Zealand will send almost a junior line-up led by Philippa Beams but also including the bright prospect of Leilani Marsh, whose presence on the Asian tour this year was a delight in terms both of talent and personality.

Canada are similarly positioned with a number of young players coming up under the tuition of Heather Wallace. It is likely Barbara Diggins, who once captained England in World Team Championships and is now World Over-35 Champion, will play in the lower order for Canada under her new residential and marriage qualifications.

Scotland have brought in the Macfie sisters, Senga and Helen, from

Richmond Town to front reinforce their youthful squad and, while Ireland have youthful charm and even some beauty to back Rebecca O'Callaghan, they were hard pressed to stay ahead in the European Championships last season and are unlikely to seriously challenge the rest of the world.

So it may be that South Africa, whose strong line up behind Claire Nitch made significant impact in Vancouver, could be among the successful semi finalists this time along with Holland and Germany.

The Dutch women seem likely to be under the direction of Jonah Barrington, the former England Director of Excellence whose current campaign for the presidency of the English SRA might not be harmed by a penetrating performance from his new charges.

The odds are on another final between Australia and England, with everything at stake individually between Martin and Jackman. But there were enough variables still recognisable prior to the warm-up event at Windsor to make the World Open a slightly risky wager, and the World Team Championship open to interpretation, not least from the results of the preceding week. ■



Is this Martine's last?

If Jackman sees herself as still at the start of a career, there is little doubt that some will reach the end in these championships.

Hopes of the two famous Guernsey girls playing a World Championships on home ground faded when Lisa Opie gave in to the increasing complaints of her body earlier this year. "At the British Open in April the 30-year-old admitted: "My body just will not take any more."

And Martine Le Moignan has inferred several times over recent months that this championship in her home town of St Peter Port will almost certainly be her last hurrah.

"I am keen to start up in personal training and I have taken my examinations for that," Le Moignan says. "I feel it is time to come off the road and settle to something else."

Of course, if the 31-year-old left-hander can crown her career with a second World Title to add to the one she took in Warmond back in 1989, the home crowds would love it. She has been good enough to make the semi finals of the last two World Opens, in both cases losing only to Michelle Martin, and after training with her father, Alan, for some weeks, she was able to create a definite presence on the Asian tour. A measure of success in the individual event

Top of the Store!

CREASEY'S

Coffee Shop

A good place to meet -
a good place to eat!

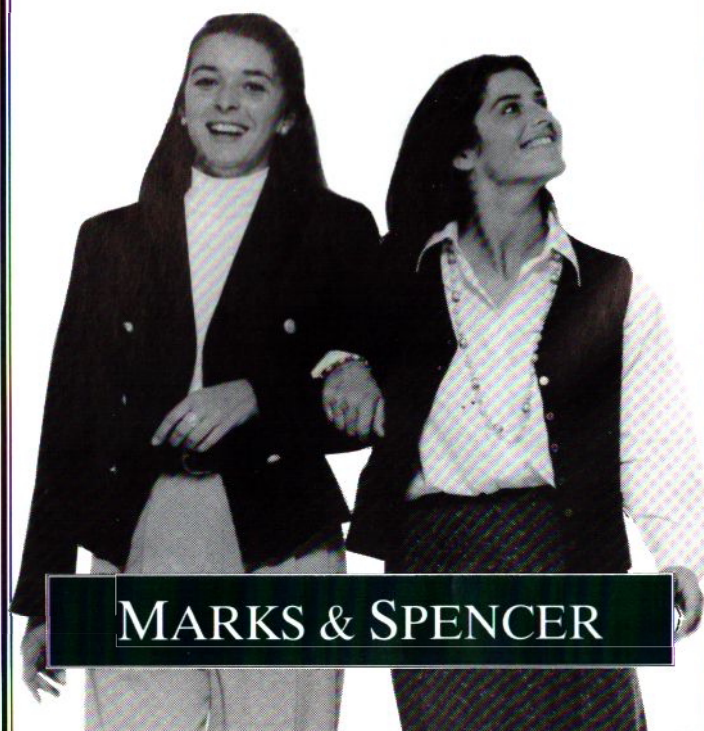
Open Monday - Saturday
9.00am - 5.00pm

Breakfast • Snacks • Lunch • Tea

Creasey's

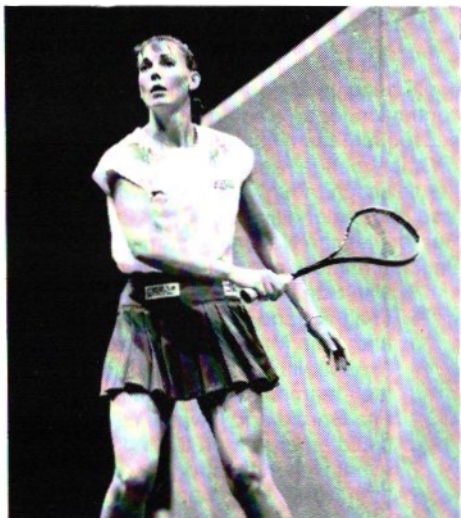
2 SHOPS IN 1 TOWN

HIGH STREET • SMITH STREET
ST PETER PORT



MARKS & SPENCER

Contenders



Michelle Martin

When Susan Devoy retired immediately after winning the World Open in 1992, the losing finalist that day took over not only the world top spot, but the role of top woman player. Michelle Martin, now aged 27, won the Hi-Tec British Open in 1993 and 1994 and has also notched up two JSM SuperSquash wins, together with triumphs in Hong Kong, Malaysia, New Zealand and Australia. September 1993 saw her in South Africa dominating the last World Open, in Johannesburg and so became the second member of the illustrious Martin family to win a world title. Indeed, the only losses in 1993 or 1994 were a semi-final defeat in the Victorian Open in August 1993 in Australia at the hands of Liz Irving, and earlier this year when she opened her account with only a runner-up slot to World No 2 Irving in the final of the Welsh Classic.

Under the watchful eye of her uncle, Lionel Robberds, himself a past topline player, she has singlemindedly worked at her game and preparation, and she is well on track to accumulating several titles in the Devoy manner; and like Devoy, shows that married women can dominate the world ranking list.



Liz Irving

After a superb 1993 and an excellent start to 1994, more recently the 29 year old Australian has suffered a blip on the progress chart. Until the British Open last April (where she was runner up to Michelle Martin) she had the satisfaction of beating the World Champion twice in recent competition, and reached the final of the World Open in South Africa in 1993. Her most recent win against Martin was in the final of the Welsh Classic in the run up period to the British Open.

She had already reached the British Open final once, in 1988 (17 years after her mother, Jenny, achieved the same fate), but having reached the last day of majors has never quite been able to pull off a victory.

There is no doubt, however, that when she recovers from her Asian lapses, where she lost to Carol Owens in Japan, Fiona Greaves in Malaysia and Senga Macfie (10/9 in the 5th) in Hong Kong, the second seed will be a serious contender for the title.

Cassie Jackman

Cassie has had her ups and downs in terms of results in the last twelve months. She hasn't attained a British Open final place yet, but described as her natural successor by great champion Susan Devoy, there is little doubt that this will come in time. Last year, despite an achilles heel problem, she did reach the final of the JSM Super Squash in Japan, and it was mainly a poor display against Sabine Schoene in the World Open in September that has kept her ranking slightly depressed.

That result, however, clearly spurred the Norfolk girl as she went on to win the Rulewave 'Meer (Netherlands) and the prestigious US Open title. There was another hiccup in the Nationals in January, but she has bounced back to become the first woman to win a match in the SRA National Men's League, and so gaining a little niche in the records book. Indeed, she gave a scare to World Champion, Michelle Martin, in the Welsh Classic, going 2/1 up against her in the quarter-finals, before finally being pegged back.

The British Open was a disappointment when she went out to Martine Le Moignan, but she did gain revenge in the semi finals of the Hong Kong Open, before losing to Martin in a hard fought final. She also reached a final against Martin in Malaysia and a semi final slot in the JSM SuperSquash during her Asian tour.



Suzanne Horner

Suzanne is now the undisputed English No 1, having taken her first Nationals title in January. She had always been close to it, and has been runner-up in the British Open on two occasions. These included last year where she beat Liz Irving and Sarah Fitz-Gerald on the way to the last day and defeat by Michelle Martin. She again reached the semi finals this year, losing to Irving in the last four.

She may be aged 31 now, but is certainly playing as well as ever, despite having been forced out of competition a few times with knee problems. The last spell, though took her to the US Open final last year and wins in the Singapore and Austrian Open. She lost to World Champion, Michelle Martin, in the Welsh Classic in February although the arbitrary scheduling did not help her in the task. This after beating English No 2, Sue Wright, in the preceding round only some twelve months previously.

Following the British Open she reached the semi finals at the JSM in Japan, and the last four in the Malaysian Open. However, a quarter final exit in the Hong Kong Open was the conclusion of her Asian tour.



Sarah Fitz-Gerald

The roller coaster which has been the career of the 25 year old Australian seems to be climbing again. In 1987 she won the World Junior title and since then has been a regular contender at world level, but back problems have sometimes restricted her continuity. During the last year Suzanne Horner beat her in five close games in the British Open, but she did subsequently reach the final of the Malaysian Open and Victorian Open, as well as winning the ACT Open and reaching the quarter-finals of the Welsh Classic in February this year, before being despatched by fellow Australian Liz Irving.

A second successive semi final slot in the British Open was followed by the Asian circuit where she lost to Jackman in the quarters in Japan and Malaysia, and similarly reached the last eight in Hong Kong.

Sarah seems to be able to combine the arduous work associated with being Chairwoman of the Women's International Squash Players Association with competitive play to good effect, and is making a success of both roles. Her ability and desire to win are not in question, and if she could score a win against her countrywomen Michelle Martin or Liz Irving she might be able to achieve her ultimate goal of a world title.



Carol Owens

Carol, a 23 year old from Victoria, is a relatively new Australian on the scene. She has made steady progress in recent years having taken the bronze in the World Junior Individual event in 1989, having already achieved a scholarship from the Australian Institute of Sport two years previously. Lower finishes in tournaments in the following years were part of the development process for the athletic right-hander, but in 1993 she came more to the fore when she reached the semi-finals of the JSM SuperSquash in Japan, and clearly liking that country, later took runner-up slot in the Japan Open. Later in the year she was the winner of the City of Adelaide Open and semi-finalist in the New Zealand Open.

In the Welsh Classic earlier this year she was thwarted in the last 16 by Michelle Martin, and reached the quarters in her first British Open. This was followed by great success in the JSM SuperSquash in Japan where she topped second seed Liz Irving on her way to a final place. Immediately afterwards she was brought down to earth by Claire Nitch in the second round in Malaysia, but recovered to reach the quarters in Hong Kong. There is little doubt that her fresh vibrant approach will not only win her friends, but take her to the final stages of more events.

Fiona Greaves

Victory in the Boston Women's Classic last year has given Fiona the taste for titles!

Fiona has always been lurking just outside the very top echelon despite recording an occasional outstanding win, but the girl from Gloucester, now aged 26, is beginning to show a more consistent level of form which may augur well for her at the World Championships. Certainly she has worked hard on her game, and reached the last 8 of the British Open by virtue of a win against Sue Wright.

In June she scored an excellent victory seed Liz Irving in the Malaysian Open which gave her a semi final slot before going down to Cassie Jackman. Jackman had beaten her in the JSM SuperSquash last sixteen the week before, but the England international knows that the next phase is one where she should be peaking and is making every effort to ensure that it happens.



Sue Wright

She may only be 24 years old, but Sue has gained formidable experience and managed considerable success. She kicked off as British Under 16 Champion and later captained the England team which won the World Juniors in 1987. Since then she has been achieving excellent results with her tigerish approach, which has turned round many match when she seemed down and out. In 1991 she sensationally defeated Susan Devoy in the quarter-finals of the British Open before losing in the all British final to Lisa Opie. A year later in 1992 she became National Champion in her first final appearance. Last season she was a semi-finalist in the British Open, beating Cassie Jackman before going down to Michelle Martin.

1994 started with reaching the National Championship final at Welwyn Garden City, though on the day Suzanne Horner prevailed. Horner proved again to be a problem at the Leekes Welsh Classic in February when she lost narrowly in the deciding game, having been 2/1 up in games during the match. The following period was affected by a knee injury. She departed tamely in the British Open but showed an increasing return to form on the Asian circuit in May/June. In Japan she reached the quarters (before going down to Horner), lost in the same round to the same player in Malaysia, but went one better by reaching the semis in Hong Kong. Michelle Martin proved the insurmountable obstacle there.

Her tenacity will surely take her a long way in the World Open. We wait to see how far.

Get out in the open with the Audi Cabriolet



St. Martin's Audi

Grande Rue, St. Martin's,
Guernsey, GY4 6RU Tel: 35533



Audi. Vorsprung durch Technik.

Women's International Squash Players Association Ranking List

Rank	Name	Country	Total	Played	Average	Pr'Rank
1	MICHELLE MARTIN	AUS	15614.0	8	1561.400	1
2	SUZANNE HORNER	ENG	8880.0	11	807.270	3
3	LIZ IRVING	AUS	7745.0	8	774.500	2
4	CASSANDRA JACKMAN	ENG	7328.0	10	732.800	4
5	SUSAN WRIGHT	ENG	5283.0	9	528.300	7
6	SARAH FITZ-GERALD	AUS	5031.5	8	503.150	5
7	CAROL V OWENS	AUS	5004.0	9	500.400	6
8	FIONA GEAVES	ENG	4405.0	10	440.500	8
9	SABINE SCHOENE	GER	4005.5	11	364.140	11
10	JANE MARTIN	ENG	3537.0	10	353.700	13
11	MARTINE LE MOIGNAN	ENG	3523.0	6	352.300	10
12	CLAIRE NITCH	SA	3323.0	8	332.300	9
13	HEATHER WALLACE	CAN	2976.0	9	297.600	14
14	VICKI CARDWELL	AUS	3045.5	11	276.860	15
15	REBECCA C MACREE	ENG	2689.0	8	268.900	12
16	LISA OPIE	ENG	2399.0	7	191.450	17
17	SHARON BRADEY	AUS	1914.5	8	191.450	16
18	SENGA MACFIE	SCO	1861.0	9	186.100	19
19	LEILANI MARSH	NZL	1988.5	11	180.770	20
20	LINDA CHARMAN	ENG	1830.0	11	166.360	21
21	PHILIPPA BEAMS	NZL	2114.0	13	162.620	22
22	TONI WEEKS	AUS	1649.5	11	149.950	24
23	MEEGHAN BELL	AUS	1430.0	9	143.000	26
24	HUGOLINE VAN HOORN	HOL	1395.0	9	139.500	23
25	ROBYN COOPER	AUS	1370.0	8	137.000	18
26	DENISE SOMMERS	ENG	1136.5	9	113.650	27
27	SARAH SPACEY	ENG	964.0	9	96.400	29
28	AMY MILANEK	USA	894.0	9	89.400	33
29	DEMER HOLLERAN	USA	862.0	6	86.200	33
30	SARAH COOK	NZ	829.0	6	82.900	39
31	SJEANNE CAWDRY	SA	820.0	5	82.000	30
32	MARJOLEIN HOUTSMA	HOL	800.0	7	80.000	31
33	JADE WILSON	NZ	787.5	7	78.750	28
34	MISHA GREWAL	IND	772.5	6	77.250	35
35	CHANTEL CLIFTON-PARKS	SA	770.0	6	77.000	32
36	NATARSHA TIPPETT	AUS	739.5	8	73.950	50
37	DANIELLE DRADY	AUS	730.0	3	73.000	25
38	ELLIE PIERCE	USA	704.0	7	70.400	38
39	DONIA LEEVES	ENG	676.0	7	67.600	36
40	JANINE HICKEY	AUS	638.5	6	63.850	37
41	CARLA ESTELL VENTER	SA	595.0	6	59.500	44
42	RACHAEL GRINHAM	AUS	562.5	5	56.250	65
43	MIYUKI ADACHI	JPN	542.5	4	54.250	42
44	NICOLE BEUMER	HOL	510.0	5	51.000	40
45	REBECCA POOLE	ENG	470.0	5	47.000	43
46	TEGWEN MALIK	WAL	431.0	5	43.100	45
47	KYM TRACEY KEEVIL	AUS	420.0	6	42.000	53
48	SABINE BAUM	GER	415.0	4	41.500	46
48	EMMA DONALDSON	SCO	415.0	4	41.500	46
50	MELANIE JANS	CAN	402.0	3	40.200	
51	CORINNE CASTETS	FRA	380.0	4	38.000	49
52	KAREN KELSO	USA	375.0	5	37.500	51
53	KIRSTY LEAH GROVES	AUS	313.0	6	31.300	67
54	HELEN MACFIE	SCO	275.0	1	27.500	
55	NURIA SALVIA CORCOLL	ESP	260.0	3	26.000	55

QUALIFYING COMPETITION

Top Half

	Round 1 Sunday 2 October Beau Sejour	Round 2 Monday 3 October Beau Sejour	Qualifier
JOHANNA WAHLBERG (Sweden)	CT 4 1200	CT 4 1200	
CLAIRE WADDELL (Scotland)			
NURIA SALVIA (Spain)	CT 5 1200		
NATALIE GRAINGER (South Africa)			
SILKE BARTEL (Germany)	CT 4 1230	CT 5 1200	
SHABANA KHAN (USA)			
WENDY MAITLAND (Scotland)	CT 5 1230		
YURIKO SAKAI (Japan)			
VICTORIA HOYT (USA)	CT 4 1300	CT 4 1245	
BEATE SEIDLER (Germany)			
SARAH STONE (England)	CT 5 1200		
NATALIA MENEU (Spain)			
MAHA ZEIN (Egypt)	CT 4 1330	CT 5 1245	
JENNY AKERVALL (Sweden)			
HELEN MACFIE (Scotland)	CT 5 1330		
VANESSA DESAI (USA)			
MISAKO SUGO (Japan)	CT 4 1400	CT 4 1330	
RASHA HEGAZI (Egypt)			
ALISON WRAY (England)	CT 5 1400		
MONIKA SPRING (Switzerland)			
ELLEN PETERSEN (Denmark)	CT 4 1430	CT 5 1330	
CARMEN AMAZONAS (Brazil)			
PAULINE NICHOLL (England)	CT 5 1430		
KUAN CHOY LIN (Malaysia)			

QUALIFYING COMPETITION

Bottom Half

	Round 1 Sunday 2 October Kings	Round 2 Monday 3 October Kings	Qualifier
MAY HEGAZI (Egypt)	CT 4 1500	CT 2 1415	
LORI STYNER (Canada)			
HELEN NICOLL (Scotland)	CT 5 1500		
JANIE THACKER (England)			
MELANIE JANS (Canada)	CT 4 1530	CT 5 1415	
CARRIE YEO (Malaysia)			
YUKO KIMURA (Japan)	CT 5 1530		
FLAVIA ROBERTS (Brazil)			
ANGELIQUE CLIFTON-PARKS (South Africa)	CT 5 1200	CT 6 1200	
CHOW CHOOI YEEN (Malaysia)			
URIATE GIL (Spain)	CT 6 1200		
NICKY BODDINGTON (England)			
EVA SVENBY (Sweden)	CT 5 1230	CT 6 1245	
HEBA ABOU OUF (Egypt)			
JENNY TRANFIELD (England)	CT 6 1230		
JORDANNA FRAIBERG (Canada)			
KARINA KERR (Brazil)	CT 5 1300	CT 6 1330	
SAMANTHA LANGLEY (England)			
LAURA HAMILTON (Scotland)	CT 6 1300		
SARAH TAYLOR (Wales)			
VANESSA ATKINSON (Netherlands)	CT 5 1330	CT 6 1415	
YASMEEN AFIFI (Egypt)			
TRACEY SHENTON (England)			
BYE			

For the very best in squash
equipment and clothing

SARNIAN SPORTS Market Street. Tel: 720540



Tel 01481 723933
Fax 01481 714435

"Have a nice day
the Baubigny way!"

We have
the finest selection
from convenient
run-arounds to Luxury models.

FREE

Delivery - Collection - Sunroofs - Radio - Baby Seats - Map - Parking Disc
No Mileage Charges * No Security Deposit



Tel 01481 729172
Fax 01481 714435

INDIVIDUAL EVENT

Main Draw - Top Half

	Round 1 Tuesday 4 October BS / Kings*	Round 2 Wednesday 5 October Beau Sejour	Round 3 Thursday 6 October Beau Sejour	Quarter-Final Friday 7 October Beau Sejour	Semi-Final Saturday 8 October Beau Sejour
MICHELLE MARTIN (Australia) (1)	1800	1515	2100	1800	1500
NICOLE BEUMER (Netherlands)					
WINNER (QUALIFIER)	1845				
AMY MILANEK (USA)					
HEATHER WALLACE (Canada) (14)	1930				
TEGWEN MALIK (Wales)					
SARAH SPACEY (England)	2015				
WINNER (QUALIFIER)					
SUE WRIGHT (England) (7)	1930	1430			
WINNER (QUALIFIER)					
CHANTEL CLIFTON-PARKS (South Africa)	2015				
NATARSHA TIPPETT (Australia)					
SHARON BRADEY (Australia) (16)	1930	1515	2100		
PAMELA PANCIS (Austria)					
SALMA SHABANA (Egypt)	2015				
PHILIPPA BEAMS (New Zealand)					
SUZANNE HORNER (England) (3)	1300 *	1300	1900	1915	
ADRIANA MOURA (Brazil)					
MISHA GREWAL (India)	1345 *				
WINNER (QUALIFIER)					
REBECCA MACREE (England) (12)	1430 *	1345			
WINNER (QUALIFIER)					
SENGA MACFIE (Scotland)	1515 *				
SARAH COOK (New Zealand)					
SARAH FITZ-GERALD (Australia) (5)	1300 *	1345	1800		
REBECCA POOLE (England)					
REBECCA O'CALLAGHAN (Ireland)	1345 *				
MEEGHAN BELL (Australia)					
CLAIRE NITCH (South Africa) (9)	1430 *	1300			
CORINNE CASTETS (France)					
DENISE SOMMERS (Netherlands)	1515 *				
WINNER (QUALIFIER)					

The Final will be played at 1600 on Sunday 9 October at Beau Sejour

INDIVIDUAL EVENT

Main Draw - Bottom Half

	Round 1 Tuesday 4 October Beau Sejour	Round 2 Wednesday 5 October Beau Sejour	Round 3 Thursday 6 October Beau Sejour	Quarter-Final Friday 7 October Beau Sejour	Semi-Final Saturday 8 October Beau Sejour
WINNER (QUALIFIER)	1300	2100	1600	1400	1615
HUGOLINE VAN HOORN (Netherlands)					
BARBARA COOPER (Canada)	1345				
JANE MARTIN (England) (13)					
DONIA LEEVES (England)	1300	2000			
WINNER (QUALIFIER)					
RACHAEL GRINHAM (Australia)	1345				
CAROL OWENS (Australia) (6)					
LEILANI MARSH (New Zealand)	1300	2100	1500		
ELLIE PIERCE (USA)					
WINNER (QUALIFIER)	1345				
VICKI CARDWELL (Australia) (15)					
CLAIRE LEVINE (Israel)	1430	2000			
DEMERE HOLLERAN (USA)					
MIYUKI ADACHI (Japan)	1515				
CASSIE JACKMAN (England) (4)					
SABINE BAUM (Germany)	1430	1900	1400		
JADE WILSON (New Zealand)					
WINNER (QUALIFIER)	1515				
SABINE SCHOENE (Germany) (11)					
TONI WEEKS (Australia)	1430	1800			
WINNER (QUALIFIER)					
KAREN KELSO (USA)	1515				
FIONA GEAVES (England) (8)					
LINDA CHARMAN (England)	1800	1800	1515		
TUULA MYLLYNIEMI (Finland)					
TAMAKI YOSHINO (Japan)	1845				
MARTINE LE MOIGNAN (England) (10)					
WINNER (QUALIFIER)	1800	1300			
ROBYN COOPER (Australia)					
KOH YOKE KEET (Malaysia)	1845				
LIZ IRVING (Australia) (2)					

All matches, (except early Rounds) will be played on the SRA "Perspex" court

The Final will be played at 1600 on Sunday 9 October at Beau Sejour

A Look Back

The last Women's World Open in Johannesburg was all about the emergence of Australia's Michelle Martin as the dominant figure in the game, while the last Women's World Team Championship in Vancouver concerned mostly the last influence of New Zealand's Susan Devoy.

Having dominated the individual event in Vancouver with what she herself described as her best ever tournament performance, Devoy then led her relatively unfancied squad to a highly competitive final of the team event against the ultimately successful Australians.

The South Africans made their mark with Claire Nitch at first string, Thelma Holt at second and Chantel ahead of her sister Angelique Clifton-Parks at third string. They won pool C going away from France, Singapore and Brazil, then cracked Germany 3-0 at the semi-final stage and Canada 2-1 in the finals to finish in fifth place.

Scotland won Pool D from the USA, Malaysia, Japan and the Cayman Islands then lost to England, Canada and Germany to finish eighth.

The big guns came out of Pool B, in which Australia finished ahead of New Zealand, the Netherlands and Finland.

England, the defending champions and highly fancied top seeds, cruised to

domination of Pool A ahead of Germany, Canada and Ireland, worried only by the strange performance of Le Moignan in contriving to lose to Rebecca O'Callaghan, the Irish first string, from a lead of two games and 4-0 in the third.

All seemed set for another England-Australia final. The only quarter final surprise came from Marjolein Houtsma's crushing of Daniella Grzenia 9-2, 9-0, 9-0 in the deciding second string rubber between the Netherlands and Germany.

Fourth place for the Dutch was an unexpected celebration for an unusually cohesive team that arrived without their usual top players Nicolle Beumer and Babette Hoogendoorn. They lost fairly comprehensively to the Australians in the semi-finals, but not many noticed above the hysteria that developed around the match between England and New Zealand.

Donna Newton, having watched Le Moignan struggle in the front court against Martin and O'Callaghan, scarcely hit the ball past the service line to win the second string rubber 9-3, 10-9, 9-6 and complement Devoy's 3-1 win over Jackman to put New Zealand in their first final since 1985. For Donna, who had been in the squad longer even than Devoy, it was a very welcome retirement gift.

It was less surprising that the experienced

30-year old knew she could beat Le Moignan in the front court than it was that Le Moignan allowed her to do it. With England coach and manager Alex Cowie shrieking in desperation for the England second string to play her natural hard hitting and unpredictable long game, Le Moignan obligingly settled herself on Newton's carefully baited drop shot hook and stayed there to the bitter end.

Only Le Moignan herself can know what she was thinking about as the rubber disappeared in 34 unbelievable minutes.

For Cowie it was a chilling end to a run of four World Team triumphs that will leave her wondering for the rest of her coaching life about her decision to play the troubled left-hander rather than Sue Wright who was champing at the bit to play at third string behind Lisa Opie.

As Jackman had her run against Devoy and Opie mopped up Marie Pearson 9-1, 9-1, 9-1 at third string, Le Moignan defeat was the crucial one. The two younger England players, Jackman and Wright, who saw their chance of a first World Team title almost wilfully thrown away by another player, were plainly furious.

In the final against the Australians with Devoy again banking first string points against Martin, the part-timer Newton took Robyn Lambourne into the same front court



The successful Australian women's team

mesmeric dance for a game or so. The Australian second string, perhaps with Le Moignan's humiliation to spur her, chose to hit the ball through the court to win 2-9, 9-2, 9-6, 9-1 and tie up the title, for the first time, since 1983. Liz Irving completed the win beating Philippa Beams 9-1, 9-5, 9-1.

A year later in Johannesburg the only certainty at the start of the first Women's World Open Championship to be played outside the context of a WSF combined event was that it would not be won by Devoy. By the end of the affair, the absence of the retired New Zealander was no less obvious than the quality of her Australian replacement: Michelle Martin.

The 26-year-old Australian took over the World Crown without dropping a game, defeating Thelma Van Eck for 9 points, Fiona Geaves for 12 points, Sarah Fitz-Gerald for 14 points, Martine Le Moignan for 10 points, and Liz Irving for just 5 points in a 31 minute final at the Standard Bank Arena.

It was an increasingly authoritative performance that marked the changing guard in the women's game just as Jansher Khan's victory on the same court 12 months previously began a new age for the men. Interesting that South Africa, so long excluded from international sporting matters should host such conclusive historic moments in squash just as its own sands are shifting so significantly.

Halfway through the tournament, Martin told the photographers to get lost until after the final. "I didn't come here to make pretty pictures. I came to get the world title," she told them.

That was a commitment that began three years earlier in Sydney when Martin, blown away in the early rounds of the 1990 World Open, sat down to consider her future. "It seemed to me that I was going nowhere then," she said. "I was not making any money and not winning. I was just about ready to give up the game completely and get into something else before it was too late."

Three things stopped her from quitting: her uncle, Lionel Robberds, convinced her that he could train her to live with the best in the world game, her manager was adamant that he could create a proper commercial framework around her obvious glamour if only she could start winning a few titles; and

her new fiancé, Steve Lacy, told her she was simply the best and far too good to give up.

In Vancouver two years stronger and with Robberds analysing her opponents one by one and constructing match strategies to suit, Martin was obviously already ahead of everyone but Devoy. In Johannesburg she was unmatched.

It seemed at the start that England's Cassandra Jackman, the 20-year-old former world junior champion, ought to be her biggest problem, with Irving, Le Moignan, Horner and Fitz-Gerald also in the hunt.

Jackman's World Open was little short of disaster. She lost from match point up at 8-5 in the fourth game to Sabine Schoene, the young German Champion whom she had dismissed from the World Junior Final two years earlier. A heavy fall on her second match ball seemed to totally unhinge Jackman while Schoene, seeing an opportunity and going for it in a steady and professional manner, pushed through for a completely unexpected semi final place.

Schoene's 58 minute 8-10, 1-9, 9-1, 10-8, 9-6 win came with her coach, Karimullah Khan, looking on, and she was not so far from upsetting Irving the following day under the same stern tutelage.

"Karimullah taught me to play when we both lived in Munich years ago," Schoene said. "We got together again this year and we have developed a good working pattern together."

It was a pattern of concentration and professionalism in stark contrast to the sunbathing exploits of some other players who might have been expected to see this championship as a genuine breakthrough opportunity. But it was not achieved at the expense of human relations. Karimullah's sense of fun is as strong as ever, as witnessed by his spontaneous inclusion in the group of Zulu singer-dancers who preceded the final at the Standard Bank Arena. Which other coach could have so successfully busked his way through 30 minutes of tribal singing and dancing without disrupting matters or once losing the rhythm?

Schoene was one of only three players with a coach in Johannesburg. Martin took her uncle and Linda Charman travelled with David Morgan who was pleased with her

performances in the warm-up events but not able to help much against Le Moignan in the first round of the main event.

In fact the warm-up circuit belonged to Lisa Opie. The former British Open Champion won two finals before starting at the Wanderers Club with a 27-0 win, the first of her entire career, over Desiree Edwards, a South African qualifier. Suzanne Horner in the second round was a step too far after most of two seasons out of the game, however. Opie lost 3-9, 2-9, 9-4, 9-0, 7-9 in 60 minutes and declared herself happy enough. "I played well and lost to Suzanne on one of her good days," she said.

This year she retired from the circuit, officially at the British Open and more personally at the Supersquash event in Japan.

Horner's best was not good enough for the other Guernsey girl in the quarter finals. She lost 0-9, 9-5, 7-9, 8-10 to Le Moignan in 50 minutes and it began to seem that the 1989 World Champion could steal a second title.

Martin scotched that idea in just half an hour to win their semi-final 9-4, 9-0, 9-6 then went on to destroy Liz Irving 9-2, 9-2, 9-1 in the final.

The 28-year-old Brisbane player had scored the only two wins over her Sydney based compatriot since the 1992 final, beating her in the semi-finals of the Welsh Classic in February and the Melbourne Classic in August. Martin was of another class in Johannesburg, however, winning with overpowering concentration and severity to improve Australia's title tale to six from eight available.

The change in Martin was marked. Her posture on court totally concentrated and aggressive. Her speed and endurance notable within an unusually glamorous package. "I seem now to be able to focus completely on the moment. Even bad refereeing calls do not enter my thinking any more. That is down to the confidence Lionel has drummed into me. He has provided the base for everything to work from," said the new leader of the game who must defend both the individual and team titles in Guernsey. ■

Colin McQuillan

WEDLAKE BELL McKEAN ENGLISH SOLICITORS

P.O. BOX 251, 1 MIGNOT PLATEAU, ST. PETER PORT, GUERNSEY, CHANNEL ISLANDS, GY1 4LG.
TEL NO: 44 - (01)481 710315 FAX NO: 44 - (01)481 714443

Wedlake Bell McKean is an English legal practice with its main office in London. The firm has an associated partnership in Geneva and is a member of Trans European Law Firms Association (TELFA) which has an office in Brussels and member firms throughout the European Union.

ENGLISH LEGAL SERVICES:

1. PROPERTY AND SECURED LENDING.
2. TAXATION, WILLS AND PROBATE.
3. LITIGATION.
4. COMPANY AND COMMERCIAL.

OFFSHORE SERVICES:

1. COMPANY INCORPORATION AND ADMINISTRATION.
2. TRUST SET UP AND ADMINISTRATION.

For enquiries please contact either Michael McKean or David Harry.

London
Wedlake Bell
16 Bedford Street, Covent Garden,
London, WC2E 9HF.
Tel: 071 379 7266
Fax: 071 836 6117

Geneva
3 Place du Molard,
1204 Geneva,
Switzerland.
Tel: 22 310 65 11 Telex: 427739
Fax: 22 310 38 66

Brussels
Telfa,
114 Bld. Brand Whitlock
1200 Brussels, Belgium.
Tel: 2 735 0206
Fax: 2 735 3713



Wedlake Bell McKean is regulated by The Law Society in the conduct of investment business.

WORLD OPEN

SUMMARY OF WINNERS

Vicki Cardwell (Australia)	1983			
Susan Devoy (New Zealand)	1985	1987	1990	1992
Michelle Martin (Australia)	1993			
Martine Le Moignan (England)	1989			
Heather McKay (Australia)	1979			
Rhonda Thorne (Australia)	1981			



Four times world champion Susan Devoy. Insets Martine Le Moignan and Michelle Martin

WORLD OPEN

SUMMARY OF RUNNERS UP

Sue Cogswell (England)	1979	
Susan Devoy (New Zealand)	1989	
Vicki Hoffman (nee Cardwell) (Aus)	1981	
Liz Irving (Australia)	1993	
Michelle Martin (Australia)	1992	
Martine Le Moignan (England)	1990	
Lisa Opie (England)	1985	1987
Rhonda Thorne (Australia)	1983	

SUMMARY OF LOSING SEMI FINALISTS

Carin Clonda (Australia)	1983		
Susan Devoy (New Zealand)	1983		
Danielle Drady (Australia)	1990		
Sarah Fitz-Gerald (Australia)	1989		
Vicki Hoffman (nee Cardwell) (Aus)	1979	1987	
Liz Irving (Australia)	1987		
Cassie Jackman (England)	1992		
Robyn Lambourne (nee Friday) (Aus)	1990		
Martine Le Moignan (England)	1985	1992	1993
Lisa Opie (England)	1981		
Sabine Schoene (Germany)	1993		
Angela Smith (England)	1979	1981	
Lucy Soutter (England)	1985		

SUMMARY OF VENUES

1979	Sheffield, England	1989	Warmond, Netherlands
1981	Toronto, Canada	1990	Sydney, Australia
1983	Perth, Australia	1992	Vancouver, Canada
1985	Dublin, Ireland	1993	Johannesburg, South Africa
1987	Auckland, New Zealand		

Women's World Open Draw



The draw for the Women's World Open took place at Castle Cornet at the end of August. The draw was made by Lady Dorey, wife of the Bailiff, Sir Graham Dorey, QC. Pictured here are (l to r) Reg Harbour, the coach and former owner of Kings Club who introduced Lisa Opie and Martine Le Moignan to squash in the early 70s, Lisa herself and the Castle's resident keeper, John Ogier.

Official Suppliers

Guernsey.



Alliance CASH and CARDS



isostar sports drink

Canon



Guernsey SRA

Beau Sejour Centre, Guernsey



The St Pierre Park



ANZ Bank



AirUK

TEAM EVENT - Stage 1

POOL A	AUSTRALIA	NETHERLANDS	SOUTH AFRICA	SCOTLAND
AUSTRALIA (1)		Tue 11 1800	Wed 12 1400	Mon 10 1400
NETHERLANDS (4)	Tue 11 1800		Mon 10 1800	Wed 12 1400
SOUTH AFRICA (5)	Wed 12 1400	Mon 10 1800		Tue 11 1400
SCOTLAND (8)	Mon 10 1400	Wed 12 1400	Tue 11 1400	

POOL B	ENGLAND	NEW ZEALAND	CANADA	GERMANY
ENGLAND (2)		Wed 12 1800	Mon 10 1400	Tue 11 1400
NEW ZEALAND (3)	Wed 12 1800		Tue 11 1800	Mon 10 1800
CANADA (6)	Mon 10 1400	Tue 11 1800		Wed 12 1800
GERMANY (7)	Tue 11 1400	Mon 10 1800	Wed 12 1800	

POOL C	FINLAND	FRANCE	SINGAPORE	BRAZIL
FINLAND (9)		Tue 11 1400	Wed 12 1400	Mon 10 1400
FRANCE (12)	Tue 11 1400		Mon 10 1400	Wed 12 1800
SINGAPORE (13)	Wed 12 1400	Mon 10 1400		Tue 11 1400
BRAZIL (17)	Mon 10 1400	Wed 12 1800	Tue 11 1400	

POOL D	IRELAND	USA	MALAYSIA	JAPAN
IRELAND (10)		Mon 10 1800	Tue 11 1800	Wed 12 1400
USA (11)	Mon 10 1800		Wed 12 1400	Tue 11 1800
MALAYSIA (14)	Tue 11 1800	Wed 12 1400		Mon 10 1400
JAPAN (15)	Wed 12 1400	Tue 11 1800	Mon 10 1400	

POOL E	SPAIN	ISRAEL	WALES
SPAIN		Mon 10 1800	Tue 11 1400
ISRAEL	Mon 10 1800		Wed 12 1800
WALES	Tue 11 1400	Wed 12 1800	

POOL F	EGYPT	SWITZERLAND	DENMARK
EGYPT		Mon 10 1800	Tue 11 1800
SWITZERLAND	Mon 10 1800		Wed 12 1800
DENMARK	Tue 11 1800	Wed 12 1800	

TEAM EVENT - Stage 2

PLACES 1 - 4

	3/4 Playoff Saturday 15	1/2 Finals Friday 14	Final Saturday 15	
		Winner Pool A 1300 - P		
		R / U Pool B		
3/4 Place	1330 - 5B		1500 - P	1/2 Place
		R / U Pool A 1800 - P		
		Winner Pool B		

PLACES 5 - 12

	Playoffs Saturday 15	Playoffs Friday 14	1/4 Finals Thursday 13	1/2 Final Friday 14	Final Saturday 15
			Winner Pool C 1300 - P		
			4th Pool A		
		1300 - 6K		1800 - 6K	
		R / U Pool D			
		1300 - 5B			
		3rd Pool B			
9/10 Place	1030 - 4B			1030 - P	5/6 Place
		3rd Pool A 1800 - 5B			
		R / U Pool C			
		1300 - 5K		1800 - 5K	
		4th Pool B			
		1800 - P			
		Winner Pool D			
11/12 Place	1030 - 5B			1330 - 4B	7/8 Place

TEAM EVENT - Stage 2 continued

PLACES 13 - 18

	Playoffs Saturday 15		1/4 Finals Thursday 13	1/2 Final Friday 14	Final Saturday 15
			Winner Pool E 1300 - 6K		
			4th Pool C		
				1800 - 5B	
			Bye		
17/18 Place	1030 - 6K		3rd Pool D		
			3rd Pool C		
			Bye		
				1800 - 4B	
			4th Pool D		
			1800 - 2K		
			Winner Pool F		
				1330 - 5K	15/16 Place

PLACES 19 - 22

	R/U POOL E	3rd POOL F	3rd POOL E	R/U POOL F
R/U POOL E		Thu 13 1800 - 5K	Sat 15 1030 - 2K	Fri 14 1300 - 5B
3rd POOL F	Thu 13 1800 - 5K		Fri 14 1300 - 4B	Sat 15 1030 - 5K
3rd POOL E	Sat 15 1030 - 2K	Fri 14 1300 - 4B		Thu 13 1300 - 4B
R/U POOL F	Fri 14 1300 - 5B	Sat 15 1030 - 5K	Thu 13 1300 - 4B	

Numbers indicate court

- P = "Perspex"
- B = Beau Sejour
- K = Kings



A FIRST CLASS SERVICE

Insurance Corporation is the Channel Islands' leading Insurance Company and applies its unique local knowledge to insurance policies for household, motor, marine, industrial and commercial risks. This ensures a wide ranging and comprehensive service at a truly Channel Island rate. **ASK YOUR BROKER FOR DETAILS NOW**

INSURANCE CORPORATION are pleased to be the sponsors of Guernsey Squash Racquets Association.

look after yourself properly with
Insurance Corporation
 Insurance Corporation of the Channel Islands Limited
 Dixcart House, Sir William Place, St. Peter Port, Guernsey, Channel Islands.
 Tel: 0481 713322 Fax: 0481 713434



Island Scan the totally independent local company for top quality repro.

We are able to accept conventional artwork or Mac and SyQuest discs - Island Scan has all the latest technology needed to produce high resolution colour work. We offer image manipulation including vignettted images, merged images, global colour change, contrast masking, cut outs, posterised images, pixel retouching, special effects . . . all to meet your own specifications without the drawbacks of being printer tied.

If you would like to find out more about what Island Scan can do for you phone us on 47747 or fax us on 49127.

Island Scan Limited, Newlands Building, Lowlands Industrial Estate, Vale, Guernsey, Channel Islands. Telephone (0481) 47747. Facsimile (0481) 49127. Registered Office 7 New Street, St. Peter Port, Guernsey.

TEAM CHAMPIONSHIPS

SUMMARY OF WINNERS

Australia	1981	1983	1992	-
Great Britain	1979	-	-	-
England	1985	1987	1989	1990

SUMMARY OF RUNNERS UP

Australia	1979	1987	1989	1990
England	1981	1983	-	-
New Zealand	1985	1992	-	-

FINAL POSITIONS

- 1979** 1. Great Britain. 2. Australia. 3. Ireland. 4. Canada. 5. Sweden. 6. USA.
- 1981** 1. Australia. 2. England. 3. New Zealand. 4. Scotland. 5. Ireland. 6. Wales. 7. Canada. 8. Zimbabwe. 9. Sweden. 10. Kenya. 11. USA. 12. Netherlands. 13. West Germany. 14. Nigeria.
- 1983** 1. Australia. 2. England. 3. New Zealand. 4. Ireland. 5. Scotland. 6. USA. 7. Wales. 8. Canada. 9. Sweden.
- 1985** 1. England. 2. New Zealand. 3. Australia. 4. Ireland. 5. Canada. 6. Scotland. 7. USA. 8. Netherlands. 9. Finland. 10. Hong Kong. 11. Wales. 12. Sweden. 13. West Germany. 14. Zimbabwe.
- 1987** 1. England. 2. Australia. 3. New Zealand. 4. Ireland. 5. Canada. 6. Scotland. 7. West Germany. 8. Netherlands. 9. Wales. 10. Sweden. 11. France. 12. USA. 13. Japan. 14. Norway.
- 1989** 1. England. 2. Australia. 3. New Zealand. 4. West Germany. 5. Ireland. 6. Scotland. 7. Netherlands. 8. Finland. 9. Canada. 10. France. 11. Sweden. 12. USA. 13. Singapore. 14. Hong Kong. 15. Sweden. 16. Malaysia. 17. Spain. 18. Papua New Guinea.
- 1990** 1. England. 2. Australia. 3. New Zealand. 4. Germany. 5. Ireland. 6. Finland. 7. Netherlands. 8. Canada. 9. France. 10. USA. 11. Scotland. 12. Switzerland. 13. Singapore. 14. Hong Kong. 15. Sweden. 16. Malaysia. 17. Spain. 18. Papua New Guinea.
- 1992** 1. Australia. 2. New Zealand. 3. England. 4. Netherlands. 5. South Africa. 6. Canada. 7. Germany. 8. Scotland. 9. Finland. 10. Ireland. 11. USA. 12. France. 13. Singapore. 14. Malaysia. 15. Japan. 16. Sweden. 17. Brazil. 18. Cayman Islands.

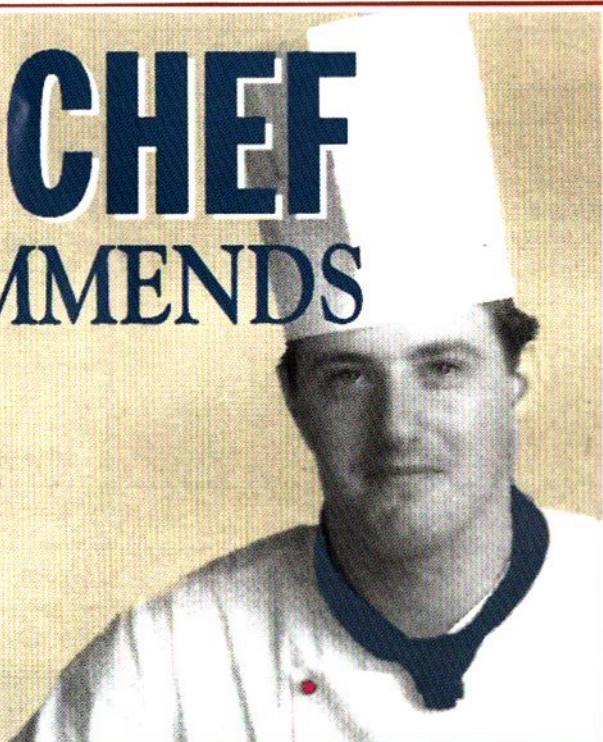
SUMMARY OF VENUES

1979	Birmingham, England
1981	Toronto, Canada
1983	Perth, Australia
1985	Dublin, Ireland
1987	Auckland, New Zealand
1989	Warmond, Australia
1990	Sydney, Australia
1992	Vancouver, Canada

NUMBERS OF TEAMS PARTICIPATING

1979	6
1981	14
1983	9
1985	14
1987	14
1989	15
1990	18
1992	18

THE CHEF RECOMMENDS



Bar Lunches 12.00 noon - 2.00pm
 Afternoon teas 2.30pm - 5.00pm
 and for Dinner 6.30pm - 9.30pm

La Barbarie Hotel,
 Saints Bay, St. Martin's
 Telephone 35217 Fax 35208



'Restaurant of the Year' competition Gold Award '92, '93, '94

The Waterfront RESTAURANT

Tel: 721503

North Esplanade, St. Peter Port
 (Next to the Tourist Information centre)

As the fisherman's catch changes daily, so do the featured dishes on our menu. We specialise in Steaks and freshly caught local Seafood. With magnificent views over St. Peter Port harbour you cannot afford to miss out on the culinary treat that is the Waterfront Restaurant.

Open 12noon - 2pm and 6pm - 10.30pm

EARLY BIRD SPECIALS

5.30 - 6.30pm
 Your choice of 7oz Steaks, Entrecote, Rump or Ribeye Served with French fries and Salad ONLY £5.95!



Team Contenders



Michelle Martin Liz Irving

Australia

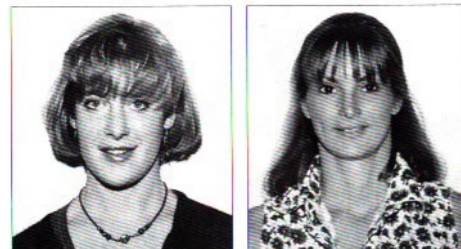
Michelle Martin Date of Birth: 29.04.67
National Ranking: 1
Liz Irving Date of Birth: 07.02.65
National Ranking: 2
Sarah Fitz-Gerald Date of Birth: 01.12.68
National Ranking: 3
Carol Owens Date of Birth: 04.06.71
National Ranking: 4
Dianne Davis Date of Birth: 04.06.71
National Ranking: 7
Coach/Manager



Flavia Roberts Adriana Moura

Brazil

Flavia Roberts Date of Birth: 29.07.61
National Ranking: 1
Adriana Moura Date of Birth: 02.08.68
National Ranking: 78
Carmem Amazonas Date of Birth: 11.10.65
National Ranking: 2
Karina Kerr Date of Birth: 02.04.75
National Ranking: 3
Lawrence Magrath Date of Birth: 02.04.75
National Ranking: 90
Coach
Eduardo Batista Coach
Manager



Melanie Jans Lori Styner

Canada

Barbara Cooper Date of Birth: 08.10.49
National Ranking: 4
Melanie Jans Date of Birth: 01.07.73
National Ranking: 2
World Ranking: 50

Lori Styner Date of Birth: 06.01.63
National Ranking: 3
Heather Wallace Date of Birth: 01.12.62
National Ranking: 1
World Ranking: 13



Ellen Hamborg-Petersen Bonnie Barr

Denmark

Ellen Hamborg-Petersen Date of Birth: 14.07.74
National Ranking: 3
World Ranking: 77
Julie Dorn-Jensen Date of Birth: 08.07.77
National Ranking: 9
Birgitte Jensen Date of Birth: 02.11.75
National Ranking: 10
Bonnie Barr Date of Birth: 18.06.75
National Ranking: 6
Coach
Andrew Dunlop Date of Birth: 09.03.63
National Ranking: 3
Ken Watson Date of Birth: 01.12.62
National Ranking: 1
World Ranking: 13
Coach/Manager

Egypt

Heba Abou Ouf Date of Birth: 01.10.62
National Ranking: 75
Salma Shabana Date of Birth: 08.10.76
World Ranking: 75
Maha Zein Date of Birth: 02.05.74
World Ranking: 80
May Hegazy Date of Birth: 01.01.77
World Ranking: 114
Coach
Ahmed Safwat Date of Birth: 01.01.77
World Ranking: 114
Coach
Dr Samiha Aboul Magd Date of Birth: 01.01.77
World Ranking: 114
Coach
Manager



Suzanne Horner Cassie Jackman

England

Suzanne Horner Date of Birth: 23.02.63
National Ranking: 1
World Ranking: 2
Cassie Jackman Date of Birth: 22.12.72
National Ranking: 4
World Ranking: 4
Sue Wright Date of Birth: 28.06.70
National Ranking: 5
World Ranking: 5
Martine Le Moignan Date of Birth: 28.10.62
National Ranking: 11
World Ranking: 11
Coach
Lucy Soutter Date of Birth: 28.10.62
National Ranking: 11
World Ranking: 11
Coach
Alex Cowie Date of Birth: 28.10.62
National Ranking: 11
World Ranking: 11
Manager

Finland

Tuula Myllyniemi Date of Birth: 09.11.64
National Ranking: 2
World Ranking: 2
Nina Taimiaho Date of Birth: 18.09.67
National Ranking: 1
World Ranking: 1
Kia Paasivirta Date of Birth: 05.05.76
National Ranking: 4
World Ranking: 4
Piia Karonen Date of Birth: 06.05.78
National Ranking: 3
World Ranking: 3
Coach/Manager

France

Corinne Castets Date of Birth: 30.06.65
World Ranking: 51

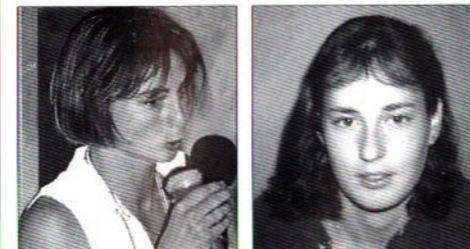
Corinne Vezin Date of Birth: 30.06.65
World Ranking: 51
Catherine Lebosse Date of Birth: 30.06.65
World Ranking: 51
Steve Alcock Date of Birth: 30.06.65
World Ranking: 51
Coach/Manager

Germany

Sabine Schoene Date of Birth: 27.01.74
National Ranking: 1
World Ranking: 9
Sabine Baum Date of Birth: 22.05.72
National Ranking: 2
World Ranking: 48
Silke Bartel Date of Birth: 30.07.75
National Ranking: 4
World Ranking: 80
Beate Seidler Date of Birth: 09.03.63
National Ranking: 3
World Ranking: 3
Coach/Manager

Ireland

Rebecca O'Callaghan Date of Birth: 18.01.64
World Ranking: 80
Olivia French Date of Birth: 18.01.64
World Ranking: 80
Ashling McArdle Date of Birth: 18.01.64
World Ranking: 80
Laura Mylotte Date of Birth: 18.01.64
World Ranking: 80
Jill McCaughey Date of Birth: 18.01.64
World Ranking: 80
Coach/Manager



Claire Levine Lee Trevis

Israel

Claire Levine Date of Birth: 17.05.68
National Ranking: 1
World Ranking: 80
Lee Trevis Date of Birth: 24.11.74
National Ranking: 2
World Ranking: 2
Jackie Goldberg Date of Birth: 12.10.71
National Ranking: 3
World Ranking: 3
Coach/Manager

Japan

Yuko Kimura Date of Birth: 02.02.70
National Ranking: 71
World Ranking: 59
Tamaki Yoshino Date of Birth: 29.05.65
National Ranking: 59
World Ranking: 59
Yuriko Sakai Date of Birth: 14.03.64
National Ranking: 96
World Ranking: 96
Misako Sugo Date of Birth: 05.05.69
National Ranking: 78
World Ranking: 78
Coach/Manager
Akiko Kajita Date of Birth: 05.05.69
National Ranking: 78
World Ranking: 78
Coach/Manager



Yoke Keet Koh Heng Kooi Carrie Yeo

Malaysia

Yoke Keet Koh Date of Birth: 07.10.67
National Ranking: 2
Heng Kooi Carrie Yeo Date of Birth: 09.02.74
National Ranking: 5
World Ranking: 5

Choy Lin Kuan Date of Birth: 06.03.75
National Ranking: 6
World Ranking: 6
Chooi Yeen Chow Date of Birth: 18.05.71
National Ranking: 9
World Ranking: 9
Coach
Manager

Jamie Hickox Date of Birth: 18.05.71
National Ranking: 9
World Ranking: 9
Maj S Maniam Date of Birth: 18.05.71
National Ranking: 9
World Ranking: 9
Coach
Manager

Mah Li Lian Date of Birth: 17.03.67
National Ranking: 1
World Ranking: 29
Della Lee Li Ling Date of Birth: 05.06.63
National Ranking: 2
World Ranking: 61
Josephine Choo Wan Koon Date of Birth: 02.08.63
National Ranking: 3
World Ranking: 52
Joannah Yue Lai Wan Date of Birth: 29.05.66
National Ranking: 2
World Ranking: 38
Norman Wee Date of Birth: 17.03.67
National Ranking: 1
World Ranking: 29
Coach/Manager

Hugoline Van Hoorn Date of Birth: 21.03.69
National Ranking: 24
World Ranking: 24
Denise Sommers Date of Birth: 03.04.69
National Ranking: 26
World Ranking: 26
Nicole Beumer Date of Birth: 20.03.65
National Ranking: 44
World Ranking: 44
Vanessa Atkinson Date of Birth: 10.03.76
National Ranking: 4
World Ranking: 4
Coach/Manager

Leilani Marsh Date of Birth: 10.07.70
National Ranking: 1
World Ranking: 21
Philippa Beams Date of Birth: 15.04.74
National Ranking: 2
World Ranking: 19

Sarah Cook Date of Birth: 13.02.75
National Ranking: 3
World Ranking: 30
Jade Wilson Date of Birth: 20.01.77
National Ranking: 4
World Ranking: 33
Coach/Manager

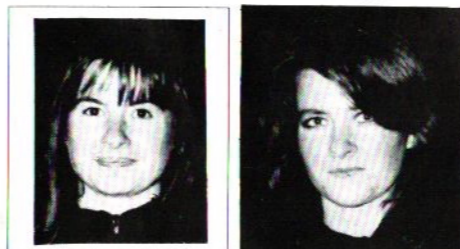
Rob Crothall Date of Birth: 18.10.68
National Ranking: 1
World Ranking: 18



Leilani Marsh Philippa Beams

New Zealand

Philippa Beams Date of Birth: 10.07.70
National Ranking: 1
World Ranking: 21
Leilani Marsh Date of Birth: 15.04.74
National Ranking: 2
World Ranking: 19
Sarah Cook Date of Birth: 13.02.75
National Ranking: 3
World Ranking: 30
Jade Wilson Date of Birth: 20.01.77
National Ranking: 4
World Ranking: 33
Coach/Manager



Senga Macfie Helen Macfie

Scotland

Senga Macfie Date of Birth: 18.10.68
National Ranking: 1
World Ranking: 18

Helen Macfie Date of Birth: 25.03.71
National Ranking: 3
World Ranking: 54
Claire Waddell Date of Birth: 20.06.75
National Ranking: 5
World Ranking: 5
Wendy Maitland Date of Birth: 19.12.75
National Ranking: 6
World Ranking: 6



Della Lee Li Ling Mah Li Lian

Singapore

Mah Li Lian Date of Birth: 17.03.67
National Ranking: 1
World Ranking: 29
Della Lee Li Ling Date of Birth: 05.06.63
National Ranking: 2
World Ranking: 61
Josephine Choo Wan Koon Date of Birth: 02.08.63
National Ranking: 3
World Ranking: 52
Joannah Yue Lai Wan Date of Birth: 29.05.66
National Ranking: 2
World Ranking: 38
Norman Wee Date of Birth: 17.03.67
National Ranking: 1
World Ranking: 29
Coach/Manager



Claire Nitch Chantel Clifton-Parks

South Africa

Claire Nitch Date of Birth: 07.08.71
National Ranking: 1
World Ranking: 12
Chantel Clifton-Parks Date of Birth: 04.06.67
National Ranking: 2
World Ranking: 35
Natalie Grainger Date of Birth: 08.07.77
National Ranking: 4
World Ranking: 4
Angelique Clifton-Parks Date of Birth: 25.11.65
National Ranking: 4
World Ranking: 4
Coach/Manager

Sue Cogswell Date of Birth: 31.10.75
National Ranking: 71
World Ranking: 71
Nuria Salvia Date of Birth: 05.08.70
National Ranking: 55
World Ranking: 55
Coach/Manager

Angel Manso Date of Birth: 23.05.77
National Ranking: 3



Gabi Hegi Anita Muller

Gabi Hegi Date of Birth: 23.05.77
National Ranking: 3

Switzerland

Gabi Hegi Date of Birth: 23.05.77
National Ranking: 3

Anita Muller Date of Birth: 09.06.75
National Ranking: 4
World Ranking: 4
Agnes Muller Date of Birth: 02.08.77
National Ranking: 5
World Ranking: 5
Monika Spring Date of Birth: 04.06.69
National Ranking: 6
World Ranking: 6
Marcel Schranz Date of Birth: 04.06.69
National Ranking: 6
World Ranking: 6
Coach/Manager



Demer Holleran Ellie Pierce

USA

Demer Holleran Date of Birth: 17.03.67
National Ranking: 1
World Ranking: 29
Alicia McConnell Date of Birth: 05.06.63
National Ranking: 2
World Ranking: 61
Karen Kelso Date of Birth: 02.08.63
National Ranking: 3
World Ranking: 52
Ellie Pierce Date of Birth: 29.05.66
National Ranking: 2
World Ranking: 38
Craig Thorpe-Clark Date of Birth: 17.03.67
National Ranking: 1
World Ranking: 29
Coach
Beth Rasin Date of Birth: 17.03.67
National Ranking: 1
World Ranking: 29
Manager



Sian Johnson Sarah Taylor

Wales

Sian Johnson Date of Birth: 08.10.57
National Ranking: 2/3
World Ranking: 2/3
Debra Turnbull Date of Birth: 03.03.66
National Ranking: 2
World Ranking: 2
Sarah Taylor Date of Birth: 24.08.70
National Ranking: 2
World Ranking: 2
Coach/Manager
Andrew Evans Date of Birth: 08.10.57
National Ranking: 2/3
World Ranking: 2/3

Guernsey boasts fresh pastures for Squash

Flashback to 1981. . . .

The joke about the Kings Club at St Peter Port is that "it is 10 minutes from anywhere and five minutes from nowhere". Therein lies one reason why this remote six-court club, only eight years old, is among the most respected in British squash. It sprang from the initiative of a businessman, who became bored with a cushioned but premature retirement and a badminton-playing mathematics teacher, who discovered that he had a natural affinity with the geometry of squash.

The only other courts in Guernsey are Elizabeth College's quaint original, built in 1946 with a sloping ceiling, and three more at a leisure centre opened in 1976. These 10 courts serve a population of about 50,000. But King's has produced three English Internationals - John Le Lievre, Martine Le Moignan, runner-up for the British national championship, and Lisa Opie - and six English junior internationals,

including Le Lievre's younger brother, Richard.

The inspiration behind them, Reg Harbour, has studied the population figures and conversion ratios ("that's the maths teacher coming out") and concludes; "There is irrefutable evidence that you are more likely to get into the England team if you come from Guernsey than if you come from anywhere else".

Harbour dates Guernsey's advance from 1970/71 when two useful players, Max Trouteaud and Allister Carey, returned to their native island from Zambia and England respectively and fostered competition (notably the annual "blood match" with Jersey, which has far more courts and players, in what had previously been merely a social squash environment. Guernsey, though, had only a dozen or so competitive players when Kings first took shape in the minds of Richard Moore, from

Bristol, and the Bolton born Harbour.

Moore's family business was taken over and he retired to Guernsey in 1970 but soon became restive. He sometimes played squash and one day he read about the game's expansion, and decided to build. He also decided that Harbour was the key in "selling" the game. Harbour had been Durham University's Badminton captain (he coached too) at the same time as Malcolm Willstrop was squash captain. They were to become two of Britain's most unusual and successful squash coaches.

Harbour was frustrated in his hopes of a career in astronomy (his interest in the star system is now taking a different form). In 1968 he became a mathematics master at Elizabeth College and John Le Lievre was one of his pupils. "John was interested in squash and used to play a little. We started to play every Sunday night and the thing developed from there. I'd been playing

badminton for 10 years and was looking for something different to do". Harbour became the College's squash master.

From these diverse scraps of kindling a flame was ignited on the site of what may be the world's second oldest tennis club. The 99-year lease granted in 1862 was allowed to lapse and the place was taken over by cows and brambles. Moore bought it and Harbour became involved with the planning and promotion. The club opened in January 1973 and six months later harbour moved to King's full-time, as joint owner ("Richard has most of the equity") joint manager and coach.

"That Christmas John, who had been a good pupil at maths and squash, went to England for the first time. We had no idea whether he would get hammered off the court". They need not have worried. Le Lievre now ranks 26th in the world, with only four Englishmen ranked above him. Via Loughborough College he acquired his present base at Nottingham, which became a Guernsey squash colony when he was joined by Richard, Miss Le Moignan and Miss Opie. On 1 February John became tournament professional to the Nottingham club.

"Reg took up the game at the same time as I did", Le Lievre says. "He was working it out while I was learning. With little knowledge of squash, he had an incredible insight into how it should be played. Now I feed information back, video tapes and so on, about what I have learned about the game at the top. We analyse it together - he's very good at that - and he devises practice routines to work on certain areas".

Harbour's methods developed before he had any contact with mainland coaching. "I coach tactical squash rather than technical squash. I try to make my youngsters use their brains instead of just hitting and running. I transfer my mathematical abilities into geometry on the court. Squash is very much a geometric game and I teach them how to force opponents to play a certain shot; something like chess. My players seem to read the game well. They know where their opponents are going to hit the ball".

A striking feature of Harbour's methods is the use of fast squash balls, as distinct from the slow "yellow dot" ball used by leading players. "We specify which ball should be used - white, red and blue, as well as yellow in our club leagues. They're forced to play with the ball I tell them to



Martine Le Moignan, Lisa Opie and Reg Harbour. Circa 1980!

play with, and I insist that the kids practice with a ball at least one speed faster than they normally use. It helps to develop ball control and geometric skills. Pakistanis are good because they come from a place where the ball is lively. British squash is a disaster - so is Jersey squash - because they only believe in one ball, the yellow dot".

Another key figure at Kings is a North Londoner, Robert (inevitably "Robbie") Burns, a brisk and wiry former PE teacher with an infectious zest for the concept of fitness through sport and an affable eagerness to help players fulfil their potential. He organises the children "from the age of seven upwards, until they don't need me anymore" (there is a graded award scheme for the progressive acquisition of skills), and even adapts rackets with broken shafts so that they can be used by tots too small to play with a full-sized racket.

Guernsey has no big spectator sport so people tend to play games instead of watching. Harbour suggests four other reasons for the island's disproportionate success. "One, there's only one club so there are no rival factions pulling people different ways. Two, therefore it is easy to have a "Mr Squash". If anybody wants anything here, they ring me. Three, youngsters are involved because there are fewer distractions for children over here, fewer places to go, and children are allowed into licensed premises. So we're selling squash as a family game and have created a family environment. Four, the Guernseyman has something to prove to the world. It's not just squash - an island environment seems to produce outstanding leaders".

To help their own players, it has always been part of Kings policy to run package tours and tournaments to attract outsiders, Steven Bowditch, who comes from Darwin ("a lot more isolated than this"), played in

last weekend's professional tournament. He made a point none of his hosts would quarrel with when he said: "The junior standard here is very good, but they may have to leave the island in order to kick on". That leads to two problems - the loss of Harbour's full time coaching and the onset of what is known as "the Guernsey lethargy". A player reaches the top in Guernsey, has trouble adjusting to the challenges of the mainland, and tends to return to the island that inspires an affectionate loyalty and a sense of security. Apart from anything else, it must be confusing to live in a land without yellow telephone kiosks.

Rex Bellamy
Times Newspaper 3 February 1981

Reprinted with kind permission

Kings Club

Kings Club was originally opened in January 1973 and despite a few changes in ownership over the years, has maintained a standard of excellence for participants and supporters in the sporting world.

The land on which Kings Club is situated has long been associated with local sport once being the home of the Guernsey Lawn Tennis and Croquet Club, boasting fifteen tennis courts, a croquet lawn, archery field and a bowling green. Such a beautiful setting came to the notice of the German occupying forces during World

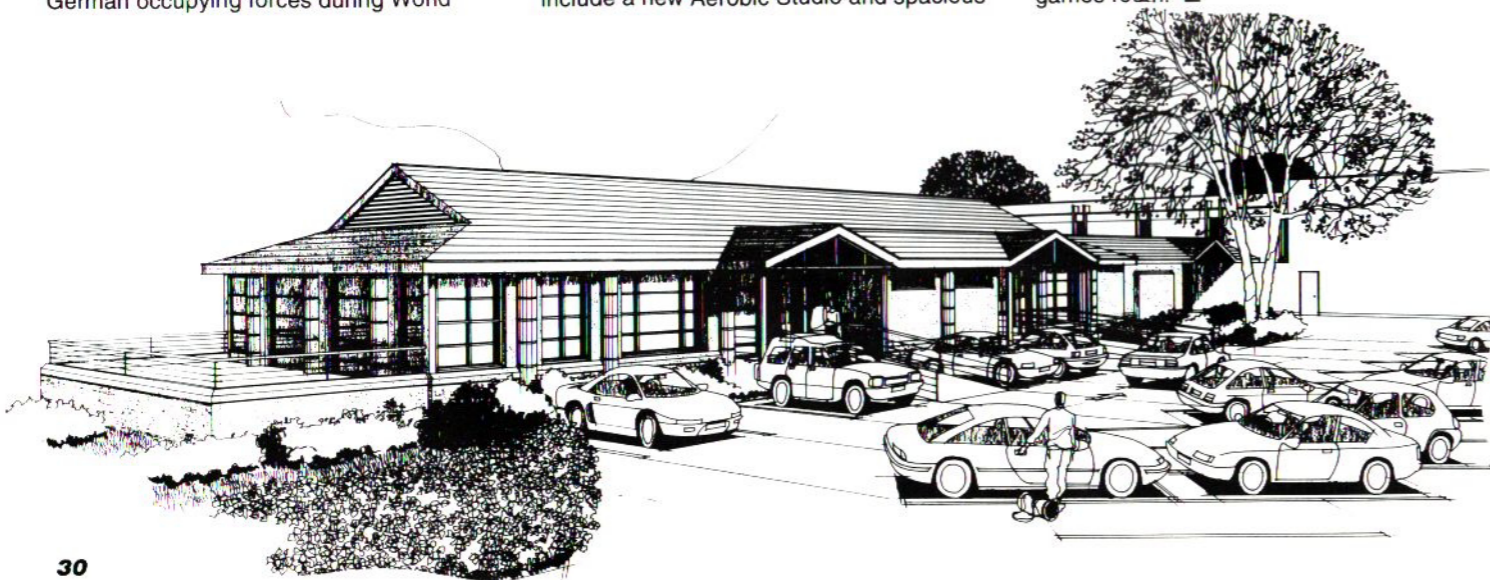
War II and they soon commandeered it for use by their officers, even managing to obtain precious supplies of rationed petrol to maintain the perfect standard of the grass!

The new owners have undertaken some general maintenance and up-grading of the Club. As well as the sports facilities and bistro style restaurant and bar, they now offer, from mid October, a gourmet restaurant and two function rooms with a 260 seat capacity.

Further additions from January 1995 include a new Aerobic Studio and spacious

gymnasium which will be equipped with state of the art machinery and a professional instructor. From August members will be able to enjoy the new exclusive health suite with indoor swimming pool, whirlpool, steam bath, sun bed and bar. Members with young children are not forgotten either with the creche facility run by professional staff and due to open in January also.

Despite Kings Club catering for the sports enthusiast, it is still possible to relax in total comfort in the Television and games room. ■



PROGRAMME

Designed and produced by **FOCUS** Publications Ltd.

16 Piette Road, St. Peter Port, Guernsey GY1 2BT

Telephone 01481 726688 • Fax 01481 726166

Colour reproduction **Island Scan Ltd**

Printed by **Guernsey Press Ltd**